



**SHEERLINE<sup>®</sup>**  
BESPOKE





INTRODUCTION TO

**SHEERLINE**<sup>®</sup>  
BESPOKE

## **Sheerline Bespoke is your go-to trade aluminium partner.**

We specialise in everything from premium roof lanterns and roof lights to conservatory roofs, contemporary lean-to structures, and elegant arched frames.

When you choose Sheerline Bespoke, you're choosing a team of knowledgeable in-house fabricators who use a combination of precision engineering, innovative design, and years of experience to manufacture high-quality products every time.

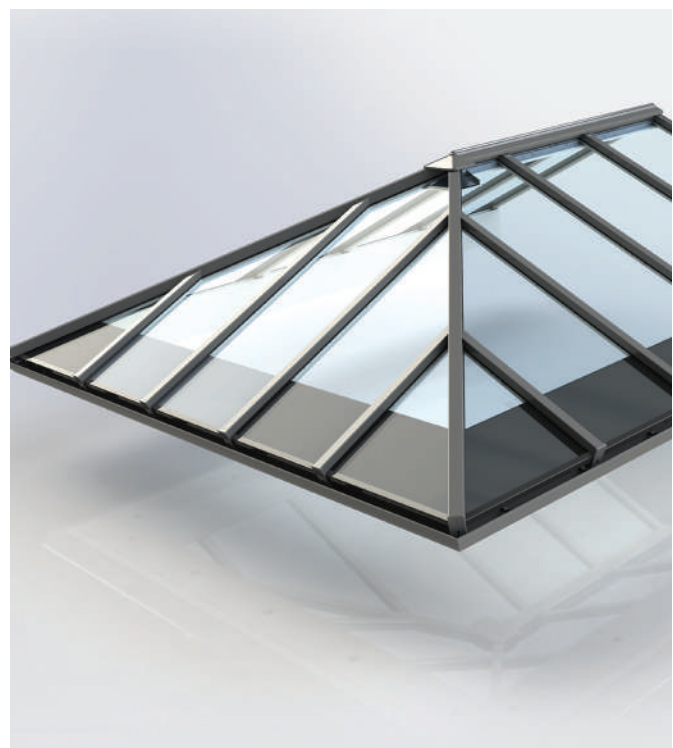
### **Customer Service**

Our core value is providing outstanding customer service at every step – from the first enquiry and quick quote turnaround to smooth delivery.

We truly care about our customers and their needs, offering a friendly, attentive service with a strong focus on detail.

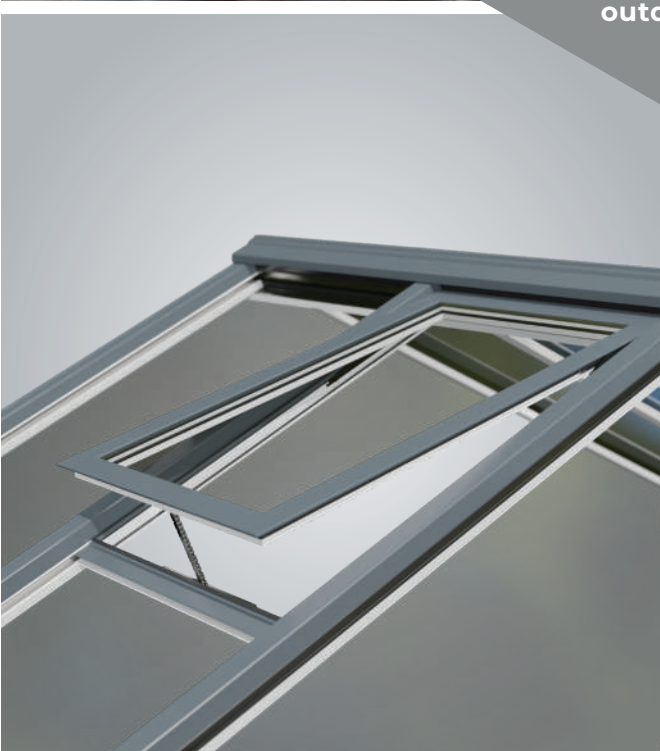
### **Technical Support**

We provide on-site support for our customers, offering assistance from the initial survey to installation and on-site training.





We offer something for every project, regardless of whether your customer is adding an extension and wants to flood the space with natural light, upgrading a tired conservatory, or wants to create a contemporary outdoor extension.



## OUR RANGE

<b>S1 ROOF LANTERN</b>	4
<b>SHEERVENT®</b>	10
<b>COLOUR OPTIONS</b>	12
<b>S2 ROOF</b>	14
<b>GLASS OPTIONS</b>	21
<b>S3 SINGLE-PITCH ROOF</b>	22
<b>FLAT ROOF LIGHT</b>	24
<b>FLAT ROOF SYSTEM</b>	28
<b>TILED ROOF SYSTEM</b>	30
<b>ROOF COVERINGS</b>	34
<b>ARCHED FRAMES</b>	36
<b>SOFTWARE SUPPORT</b>	38





THE UK'S MOST  
**SECURE, SUSTAINABLE  
AND STYLISH ROOF  
LANTERN**

WITH GREAT LOOKS FROM EVERY ANGLE  
- DUE TO OUR UNIQUE ULTRA-LOW LINE AESTHETICS.

**CONFIGURATIONS:** 13 different roof styles - including pyramids.

SLIM SIGHTLINES

**50mm**

Rafter, hip, jack rafters & ridge

FIXED PITCH

**25°**

MAX SIZE

**3200 x 6000mm**



SNOW LOAD

**1.2KN/m<sup>2</sup>**

Covering the whole of the UK\*



**UPGRADE  
OPTION**

AVAILABLE

\*Up to 200m altitude





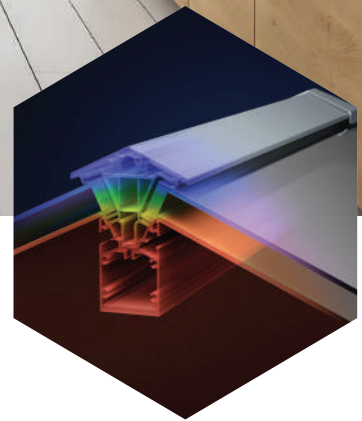
## SECURE

Features such as anti-tamper security screws, a patent pending glass lock and the fact that all top caps are protected by overlapping castings, protecting them from attack, make S1 one of the most secure lanterns available.



## STYLISH

Clean lines and discreet external aesthetics create an exceptional looking roof with corner and rafter end caps that run perfectly parallel with the perimeter of the roof. While deep internal rafter and ridge bars create a high end architectural aesthetic.



## SUSTAINABLE

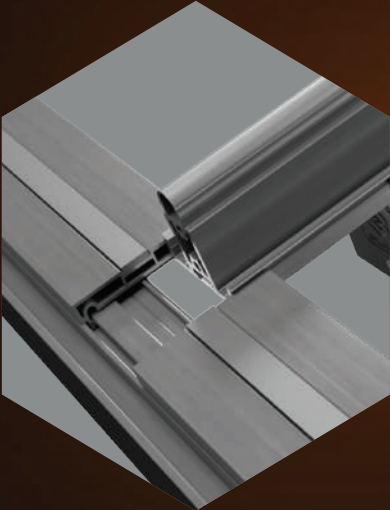
Thermlock® multi-chamber technology, far superior to traditional polyamide, helps make S1 the most thermally efficient lantern in its class. Inbuilt perimeter seals and a snow load rating of 1.2 KN/m<sup>2</sup> also ensures S1 is ready for the worst of British weather.

Insulated with  
**THERMLOCK**<sup>®</sup>  
technology

# THERMAL PERFORMANCE

Thermlock<sup>®</sup> multi-chamber technology used in the eaves beam, ridge and all rafter and hip bars creates an exceptionally thermally insulated lantern.

With a unique co-extruded perimeter seal ensuring draughts and rain are kept safely outside, while 28mm glazing allows acoustic dampening glass to be fitted if required.



**Our eaves beam design also ensures aluminium sections remain internal, preventing cold bridging and condensation issues.**



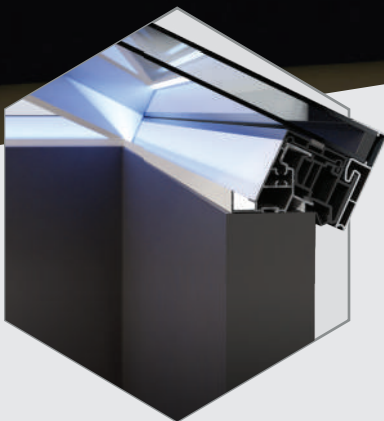
## INSTALLER FRIENDLY

Unique hook brackets support the hip rafters during construction, simplifying fitting on site and speeding up installation.

We've also designed out many common issues installers encounter and include internal rafter end caps to prevent bars marking the eaves beam during installation.

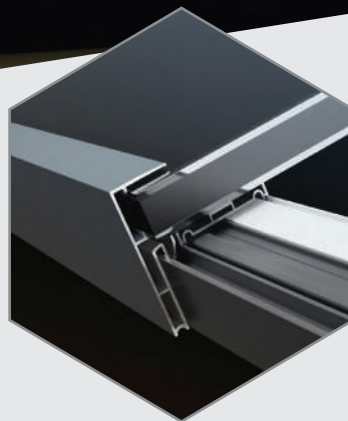


STYLE OPTIONS  
**AVAILABLE IN A  
 CHOICE OF 13 STYLES  
 FROM SQUARE  
 'PYRAMID' DESIGNS  
 TO GRANDER  
 OPTIONS SUITABLE  
 FOR LARGER  
 'ORANGERY' STYLE  
 INSTALLATIONS**



#### **LED FEATURE**

S1 lanterns feature integral LED light channels in the ridge and eaves – giving an easy way to add lighting to an installation if required.



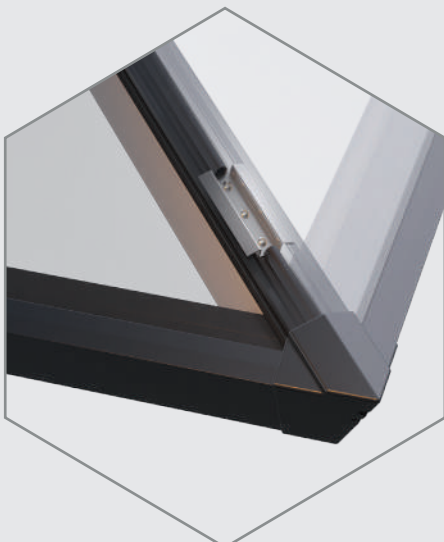
#### **PRECISION ENGINEERED**

S1 uses the patented Sheerline corner construction method to create a square and rigid eaves beam. While integral glass locks ensure a perfect, highly secure finished product.



#### **REFINED AESTHETICS**

Slim, consistent 50mm rafter, hip and ridge sightlines maximise the light flooding into interiors. Shallow top caps sit just 8mm above glass to complete the ultra-low profile external aesthetic.



## **SECURITY UPGRADE OPTION AVAILABLE**

The SBD upgrade uses security clamping plates to lock laminated glass in place, preventing lifting and removal by would-be intruders† even if rafter top caps have been removed.

**These stainless steel components are held firmly in place by security screws for added strength.**

† Based on SBD's text criteria



# STYLE EXAMPLES

**STYLE 1**  
Min 600 x 600mm  
Max 2400 x 2400mm

**STYLE 2**  
Min 800 x 600mm  
Max 3000 x 2400mm

**STYLE 4\***  
Min 2400 x 600mm  
Max 6000 x 2400mm  
Showing Sheervent®

**STYLE 10\***  
Min 3600 x 1800mm  
Max 6000 x 3200mm

**STYLE 13\***  
Min 3000 x 1400mm  
Max 6000 x 3200mm

STYLES MARKED WITH \* CAN INCORPORATE AN OPTIONAL SHEERVENT®

THERMALLY BROKEN EAVES BEAM SHOWING GLASS LOCK AND INTEGRATED LED CHANNEL

SNOW LOAD  
**1.2KN/m<sup>2</sup>**

MIN SIZE  
**600 x 600mm**

MAX SIZE  
**3200 x 6000mm**

PITCH  
**25°**

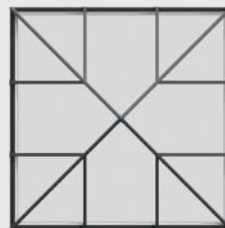
SIGHTLINES  
**50mm**  
Rafter, hip, jack rafters and ridge



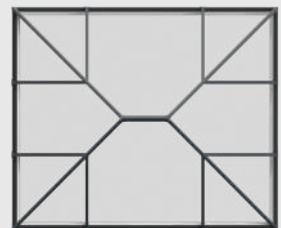
**STYLE 3**  
Min 1200 x 600mm  
Max 4000 x 2400mm



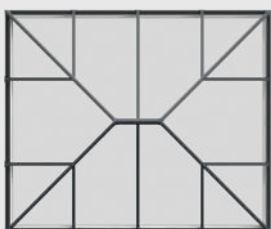
**STYLE 5\***  
Min 3000 x 600mm  
Max 6000 x 2400mm



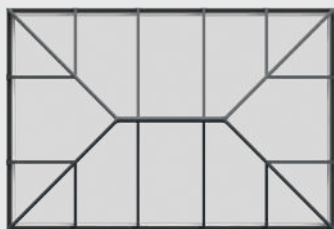
**STYLE 6**  
Min 1800 x 1800mm  
Max 3200 x 3200mm



**STYLE 7**  
Min 2000 x 1800mm  
Max 3400 x 3200mm



**STYLE 8**  
Min 2000 x 1800mm  
Max 4000 x 3200mm



**STYLE 9\***  
Min 3000 x 1800mm  
Max 6000 x 3200mm



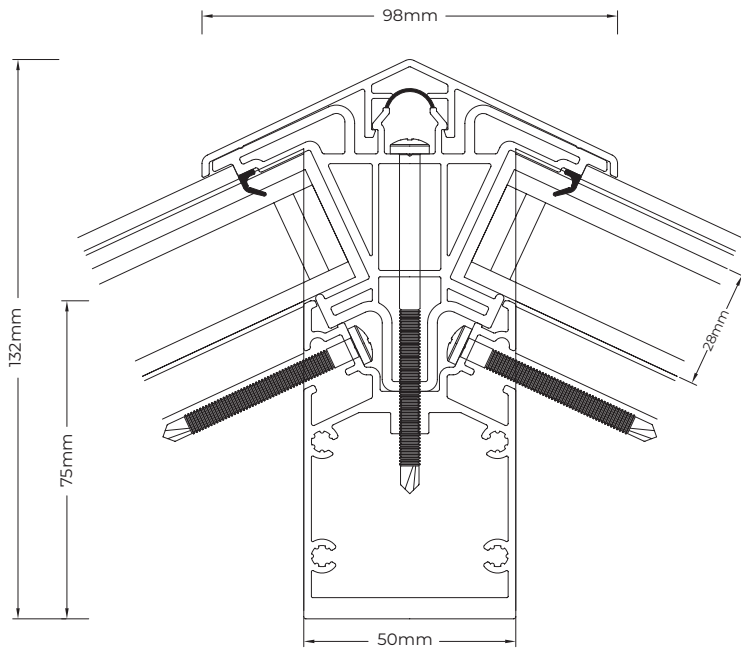
**STYLE 11**  
Min 1600 x 1400mm  
Max 4000 x 3200mm



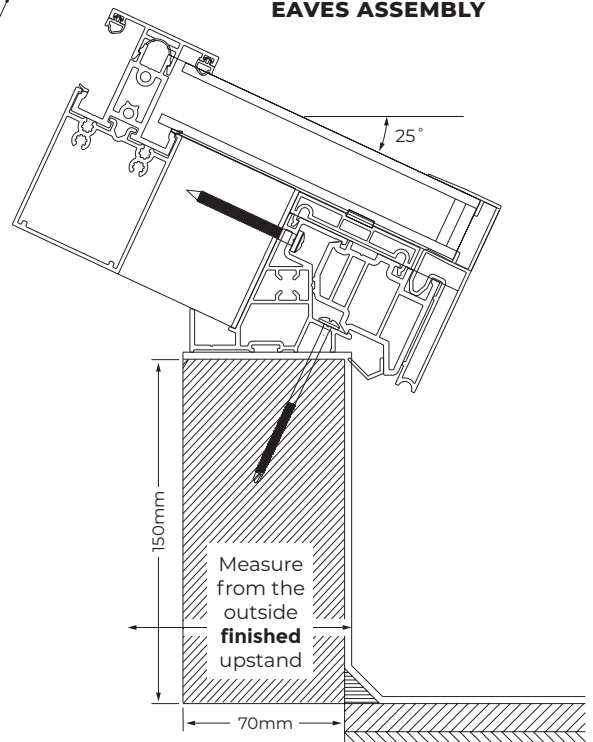
**STYLE 12\***  
Min 2400 x 1400mm  
Max 6000 x 3200mm



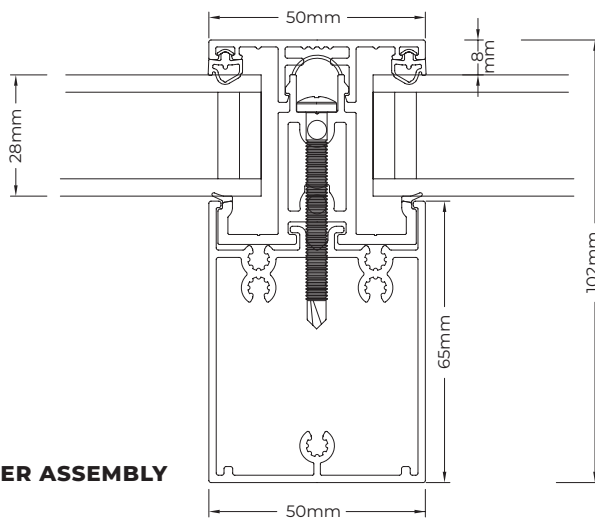
### RIDGE CROSS SECTION



### EAVES ASSEMBLY



### RAFTER ASSEMBLY



The Sheerline SI Lantern system is covered by the following patents / patents pending:

- UK Patent Number: G82569209 - A Joint For a Fenestration Unit
- European Patent Pending: 19188948.4 - A Joint For a Fenestration Unit
- US Patent Pending: 16/525787 - A Joint For a Fenestration Unit
- UK Patent Pending: 2104344.3 - Lantern Roof Corner Assembly
- UK Patent Pending: 2104484.7 - Lantern Roof Hip Rafter Assembly

# ***SHEERVENT***<sup>®</sup>

**FLUSH INTELLIGENT VENTILATION**



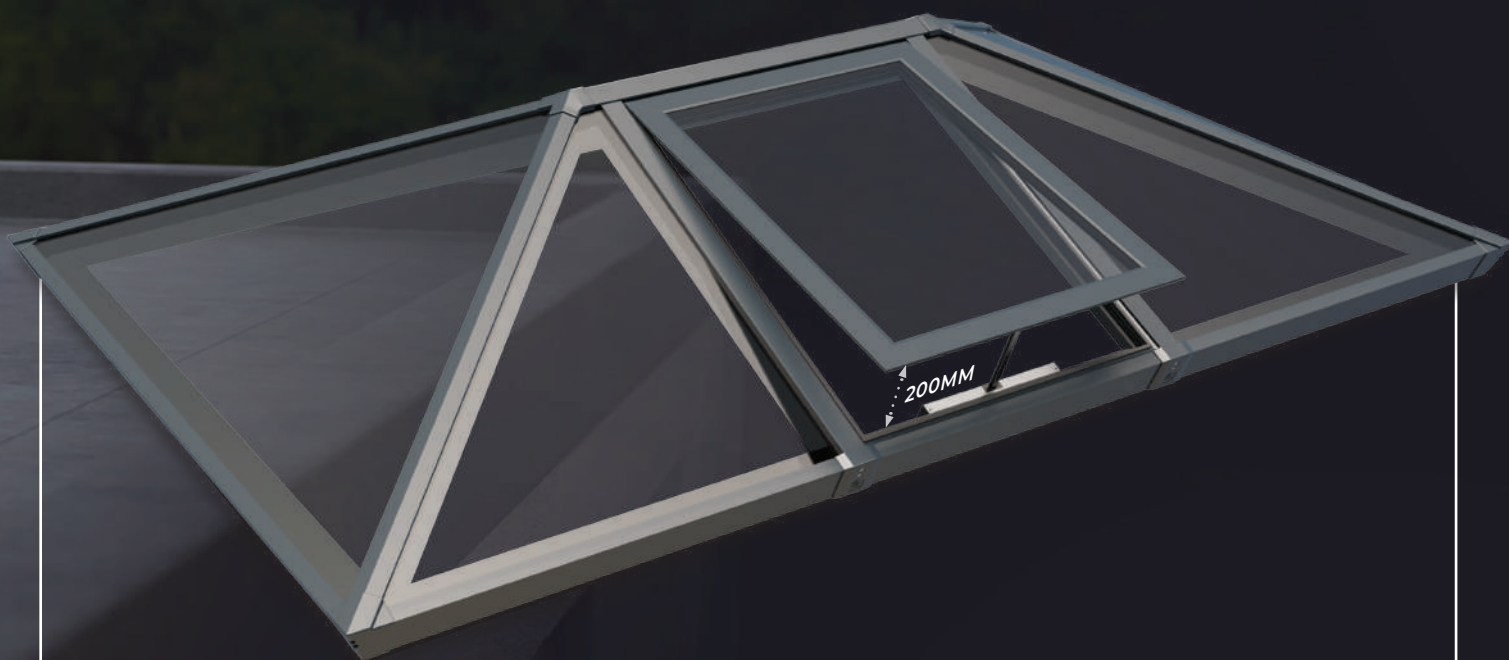
**FULLY THERMALLY BROKEN AND USING THE SAME  
HIGH-PERFORMANCE 28MM GLAZING AS THE REST  
OF THE S1 ROOF.**

With a sleek minimalist design that sits perfectly flush with S1's rafter bars, and using powered actuators that can be intelligently automated, Sheerline has re-imagined roof vents, bringing them into the 21<sup>st</sup> century at last.





**DISPENSING WITH  
THE NEED FOR  
MUNTIN BARS,  
SHEERVENT®  
OFFERS RELIABLE  
VENTILATION  
WITHOUT THE RISK  
OF LEAKS.**



MIN SIZE  
**600mm w x 550mm h**

MAX SIZE  
**1000mm w x 2000mm h**

GLAZING  
**28mm**



- REMOTE CONTROL
- WIRED ACTUATOR
- RAIN SENSOR

## OUR LANTERNS ARE AVAILABLE IN THE FOLLOWING COLOURS

### STANDARD LANTERN COLOURS



### BESPOKE LANTERN COLOUR EXAMPLES



Available in  
Matt, Satin, Gloss or Textured finishes.

**DISCLAIMER** Due to the variability of manufacturing processes and the differences in the methods used to represent these colours, we cannot guarantee an exact colour match between the actual paint colour and the colour as seen on-screen or when printed. The RAL colour references are also provided as a guide only and we recommend asking to see a physical sample prior to order if required. All colours and finishes are supplied within standard tolerance ranges.









# NEXT GENERATION CONSERVATORY

FROM THE ALUMINIUM EXPERTS

ALLOWING INSTALLERS AND FABRICATORS TO DIFFERENTIATE  
THEIR CONSERVATORY OFFERING WITH A MODERN, EASY-TO-FIT,  
THERMALLY EFFICIENT PRODUCT.

VERSATILE PITCH RANGE  
**2.5 - 37.5°**

POLYCARBONATE  
**25/35mm**

GLASS  
**24/36mm**

 **Polypipe**

**USES THE 'TRIED & TESTED'**  
POLYPIPE PLUS RAINWATER RANGE





#### **STRONGER DESIGN**

Bigger spans are possible using standard parts



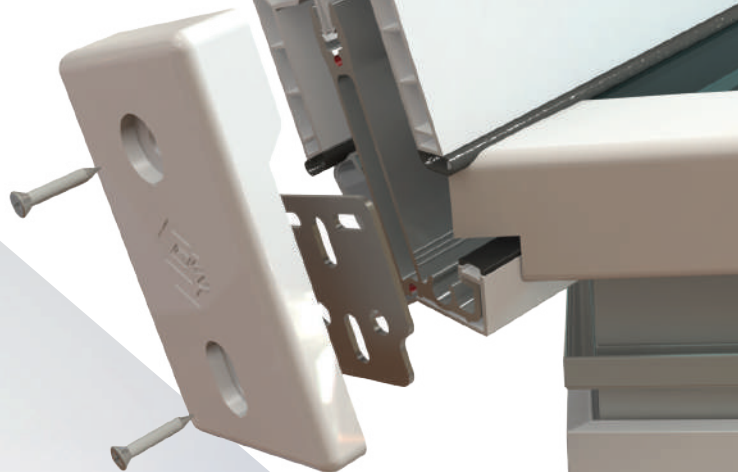
#### **THERMALLY BROKEN**

More thermally efficient - creating a key sales advantage



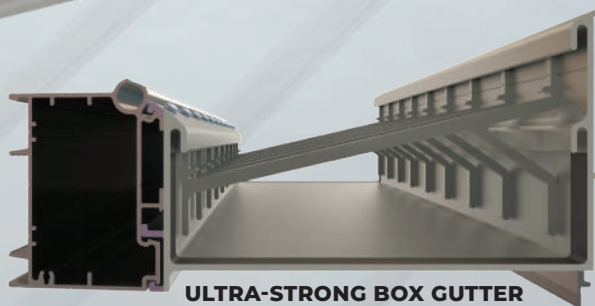
#### **MODERN LOOKS**

Squared aesthetics offer a more up-to-date appearance

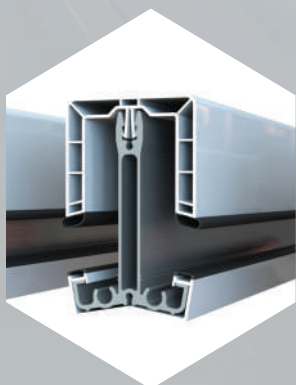


## **VERSATILE DESIGN BORN FROM EXPERIENCE**

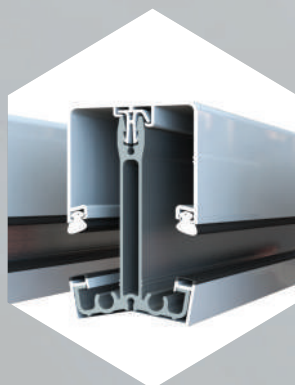
**S2 Systems can accommodate every style and combination of roof,** new slimline appearance of the roof alongside customisable options such as variable internal pelmet and aluminium gutter shroud will add the finishing touches to any glazed extension.



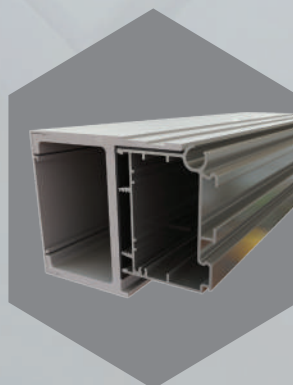
**ULTRA-STRONG BOX GUTTER**



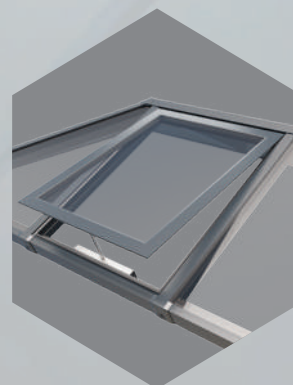
Multi-chambered PVC-U cappings



Aluminium capping upgrade option



Eaves Beam Bolster to span large openings for bi-fold or patio doors



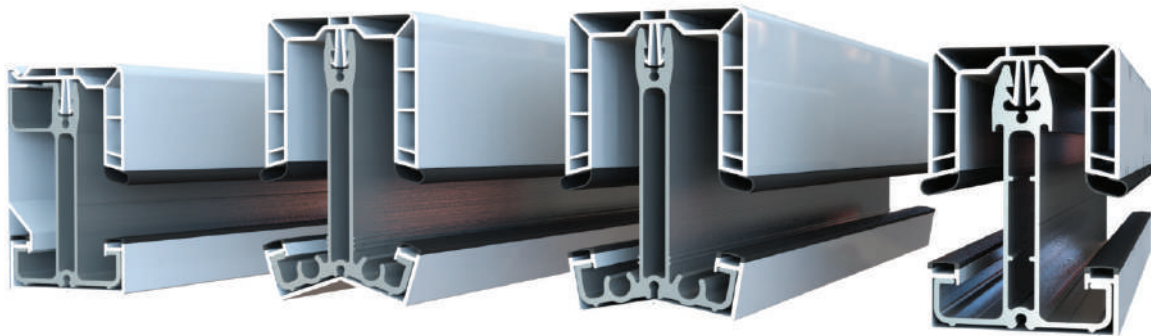
**EXCLUSIVE Vent Option**  
**SHEERVENT®**  
FLUSH INTELLIGENT VENTILATION



# GLAZING BARS

**CHAMBERED PVC-U CAPPINGS ARE FITTED AS STANDARD,  
OFFERING IMPROVED THERMAL PERFORMANCE**

PVC-U



**ALUMINIUM CAPPINGS ARE AVAILABLE FOR AN ULTRA HIGH-END FINISH**

ALUMINIUM



**The glazing bars for the S2 system have been engineered with a modern and slimline look, but they do not compromise in either strength or appearance.**

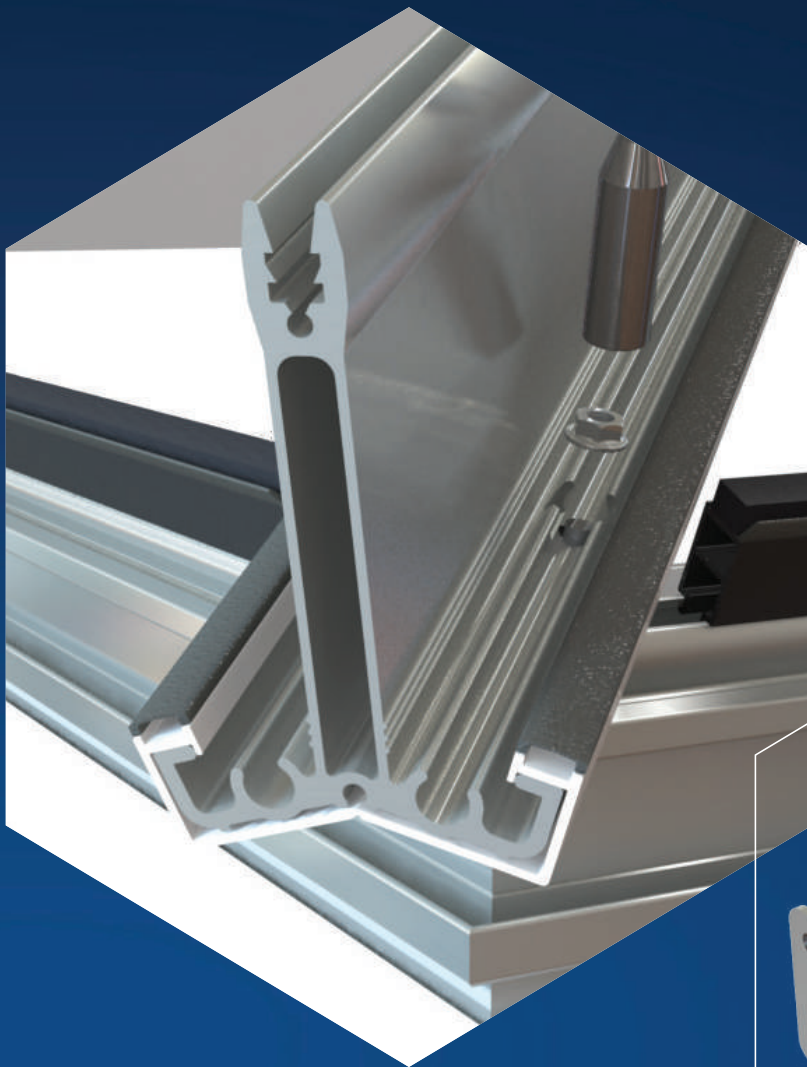
The S2 has been designed to cater for large projections associated with modern glazed extensions, but still maximising the glazed area within the structure. The S2 range of roofing bars will outperform the competition to create those grand designs, today's consumers desire.



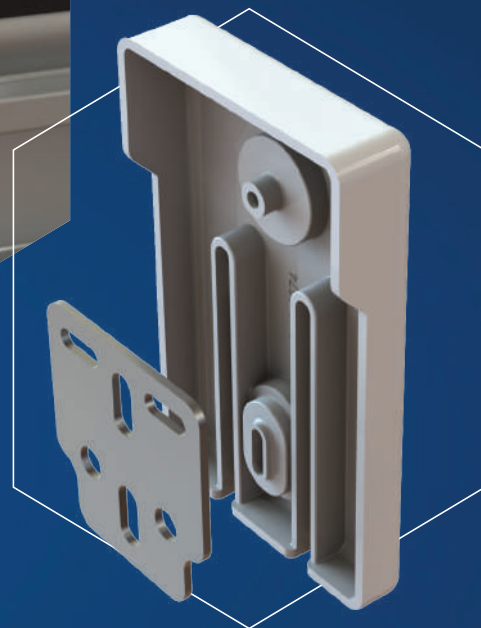
## JACK RAFTER

- Strong mechanical fixing
- Victorian and Georgian hip designed with a circular channel to accept a pivot bolt to allow for pitch variations
- Jack rafter arm with a unique glass paddle to prevent slippage of glazing into valley applications
- Stronger connection
- Jack rafter bolt encapsulated into bar





**HIGH PRECISION  
END CAPS  
COMPLETE THE  
DISTINCTIVE  
MODERN  
AESTHETICS**



## FEATURES

- Chambered PVC capping as standard
- Square contemporary internal and external cladding
- 24mm/36mm glass
- 25mm and 35mm polycarb options
- Square end caps
- Glazing security plates prevents glass slippage without reducing glass overhang
- Aluminium lean-to cloaking trim (versus PVC that warps)
- Internal bolster with modern aluminium cladding
- Range of glazing bar specification, from light through to heavy duty bolster
- Available in any RAL colour

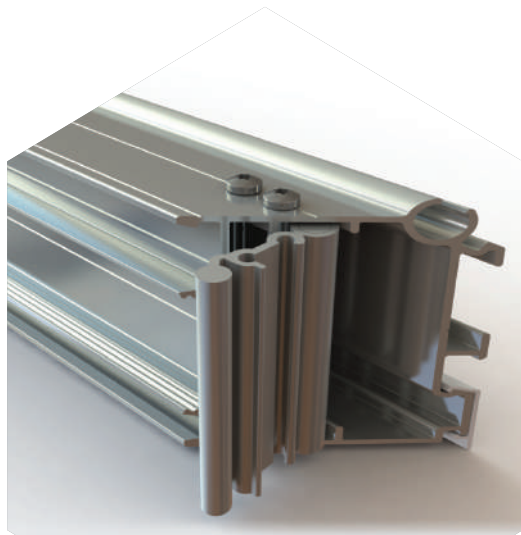


**Bolster cover to eaves beam cover  
- Optional**



# EAVES BEAM

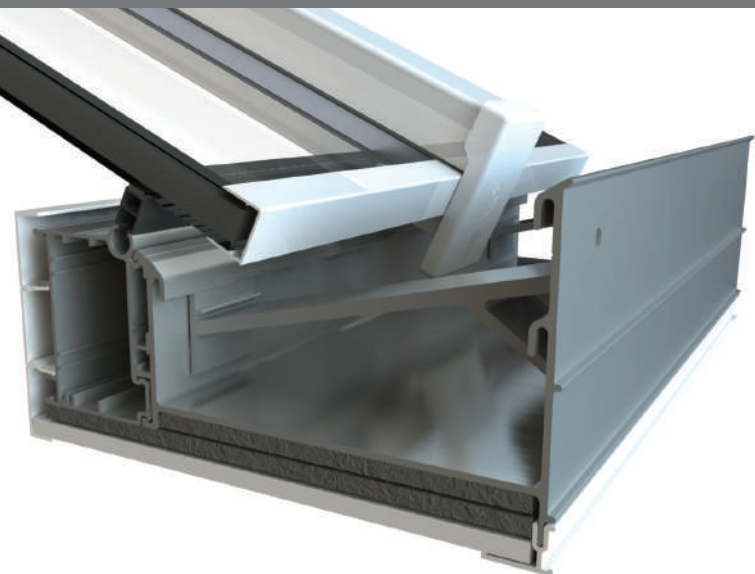
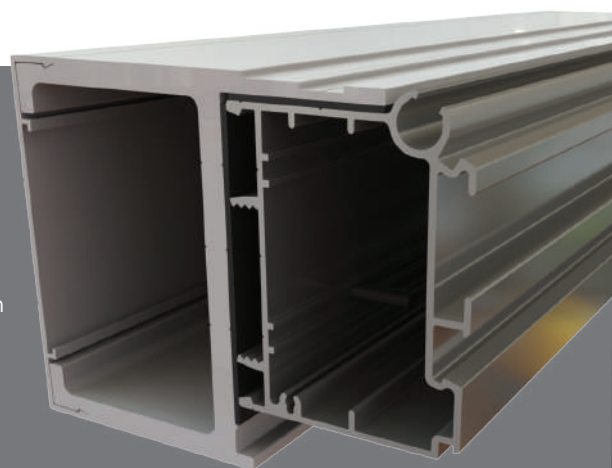
**Designed for greater spanning capability versus the competition. The box eaves beam provides strength and stability where required whilst accommodating all design and style options. Perfect for meeting homeowner demand for wide panoramic doors incorporated into their conservatories.**



**EAVES BEAM  
CONNECTOR**

## EAVES BEAM BOLSTER

- For additional support over wider opening for bi-fold and sliding doors
- Innovative discreet design to sit over and behind the existing eaves beam
- Works seamlessly with rest of the S2 system including box gutters with no additional notching required
- Aluminium internal clip in cladding to match the existing eaves cladding
- Available in White, Rosewood and Grey as standard
- Available in any RAL colour



## BOX GUTTERS

**The S2 box gutter is class leading in terms of design and function.**

This high capacity box gutter has been designed to eliminate unsightly gallows brackets to support the box gutter meaning the gutter is simple yet highly effective.

- Self supporting box gutter with discreet internal support brace – no need for gallows brackets
- High capacity as standard
- Box gutter independent from eaves beam – no awkward mitres or notching
- Box gutter adaptors sit outbound, no chance of leaking joints back into the conservatory



# GUTTER SHROUD

- All aluminium 2 part design
- Powder coated finish
- No unsightly gutter wires or hanging brackets
- Zinc die cast gutter brackets support the gutter shroud from within
- Die cast corner and inline jointers for professional appearance
- Designed to provide stunning architectural detailing



## INTERNAL PELMET

Create orangery style roofs with the S2 internal pelmet, this simple addition is a cost effective way to create an orangery feel but results in a premium look and feel.

Combine this with the gutter shroud externally for a superior glazed extension.

- Ingenious, simple design which can be fabricated in house and adjusted on-site
- Quick to install
- Adaptable to all roof styles, designs and pitches
- Stunning finished detail

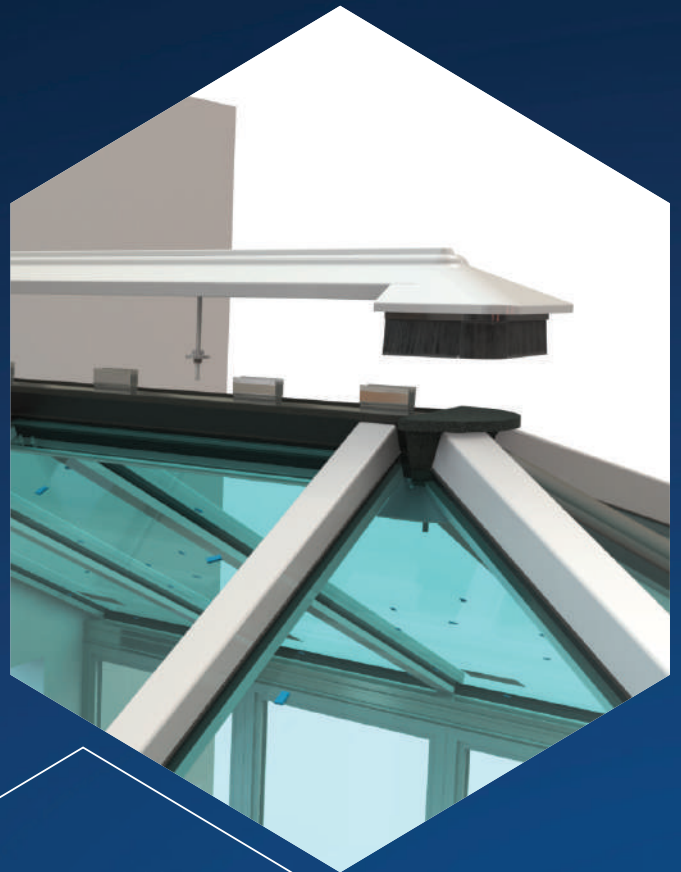
S2's internal pelmet is the perfect way to add perimeter lighting to a conservatory



# RIDGE AND WALL PLATES

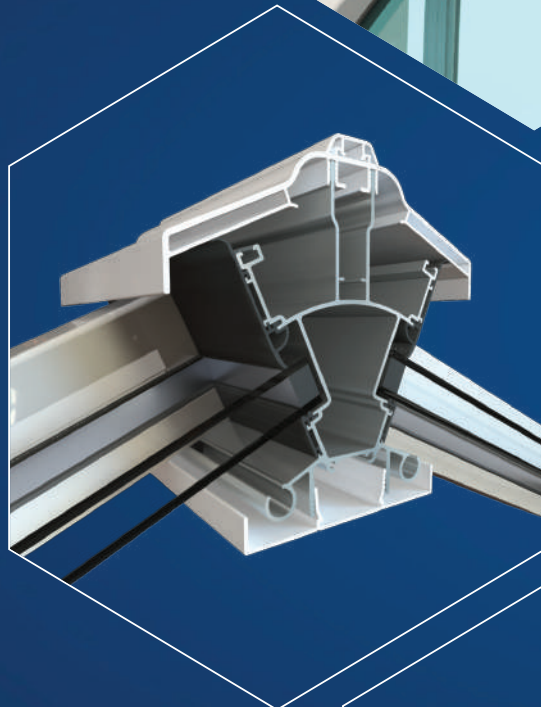
**The sleek yet strong S2 ridge system captures all the design principles of the new S2 roof.**

A low profile ridge capping ensures the top line of the ridge is clean and modern for the contemporary design, but this can be upgraded to a more traditional feel with a selection of cresting's and finials.



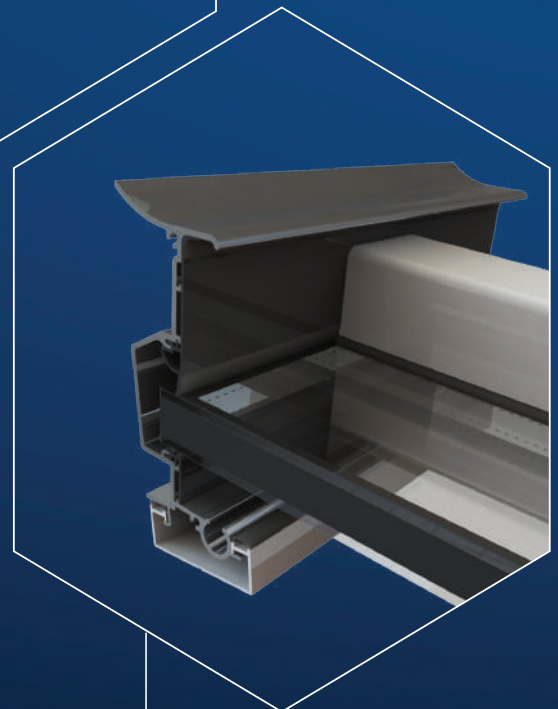
## RIDGES

- Slimline ridge system as standard
- Fixed and variable ridge options
- Square internal cladding for modern uncluttered aesthetics
- Utilises same internal cladding as eaves beam for matching cladding
- Low profile ridge option as standard
- Two styles of final & cresting available
- Available in PVC & full aluminium options
- Foam and brush weather seal
- Available in any RAL colour



## WALLPLATES

- 2.5 degree wallplate for low pitch solutions
- Simple and easy to install, fixed 5-10° wall plate for standard lean-to and canopy roofs
- Variable wallplate for pitched range of 5-30°
- Variable wallplate with radius ends for hipped lean to applications
- PVC and aluminium cladding option
- Available in any RAL colour



**FIXED WALL PLATE**



# ROOF GLASS OPTIONS

Roof glass is positioned in a different orientation to window glass, therefore has a different requirement and job to do.

Choosing the right high performance roof glass is one of the most important elements to consider when installing a roof light, lantern or conservatory product.

There are various options to choose from with benefits including, self-cleaning properties, and beautiful visual options to suit any property style and budget.

## KEY CONSIDERATIONS



### SELF-CLEANING GLASS

A coating that reacts with UV rays in sunlight to generate a photocatalytic process, that loosens and breaks down organic dirt particles on the surface of the glass.



### U-VALUE

A measure of air-to-air heat transmission (loss or gain) due to thermal conductance, and the difference in indoor and outdoor temperatures. The lower the U-Value, the more efficient the insulation.



### SOLAR FACTOR

Solar control glass helps regulate the amount of solar energy that enters a room or building. This helps control comfort levels inside a building by controlling indoor temperatures and light levels.



### LIGHT TRANSMISSION

Is the measurement of light passing through glass. Too much light can create an uncomfortable environment with glare becoming a particular problem.

## BLUE GLASS

PRODUCT	U-VALUE	SOLAR HEAT REFLECTION	LIGHT TRANSMISSION	SELF CLEANING
BLUE / LOW E	1.2	60%	47%	✓
BLUE / CLEAR	2.7	52%	52%	✓

## NEUTRAL GLASS

PRODUCT	U-VALUE	SOLAR HEAT REFLECTION	LIGHT TRANSMISSION	SELF CLEANING
NEUTRAL / LOW E	1.2	60%	37%	✓
NEUTRAL / CLEAR	2.7	52%	45%	✓

## AQUA GLASS

PRODUCT	U-VALUE	SOLAR HEAT REFLECTION	LIGHT TRANSMISSION	SELF CLEANING
AQUA / LOW E	1.0	82%	30%	✓
AQUA / LOW E	1.2	76%	33%	✓
AQUA / CLEAR	2.7	71%	34%	✓

## BRONZE GLASS

PRODUCT	U-VALUE	SOLAR HEAT REFLECTION	LIGHT TRANSMISSION	SELF CLEANING
BRONZE / LOW E	1.2	55%	38%	✓
BRONZE / CLEAR	2.7	43%	53%	✓

## SUNSHADE BLUE GLASS

PRODUCT	U-VALUE	SOLAR HEAT REFLECTION	LIGHT TRANSMISSION	SELF CLEANING
SUNSHADE / LOW E	1.0	82%	25%	✓
SUNSHADE / CLEAR	2.7	72%	28%	✓

## DARK BRONZE GLASS

PRODUCT	U-VALUE	SOLAR HEAT REFLECTION	LIGHT TRANSMISSION	SELF CLEANING
ULTRA / LOW E	1.0	91%	8%	✓
ULTRA / LOW E	1.2	89%	9%	✓

## TRIPLE GLAZED GLASS

PRODUCT	U-VALUE	SOLAR HEAT REFLECTION	LIGHT TRANSMISSION	SELF CLEANING
SUNSHADE BLUE / LOW E / LOW E	0.7	84%	24%	✓
AQUA / LOW E / LOW E	0.7	85%	24%	✓
ULTRA / LOW E / LOW E	0.7	94%	6%	✓
BLUE / LOW E / LOW E	0.7	73%	42%	✓
NEUTRAL / LOW E / LOW E	0.7	76%	33%	✓
BRONZE / LOW E / LOW E	0.7	73%	37%	✓

## OVERSIZED GLASS

- Maximum length of 4000mm
- Manufactured in 4mm toughened glass
- Aesthetically pleasing
- No potential for leaks as with muntin bars
- Increased roof design
- Self cleaning glass performs efficiently





# MODERN SINGLE PITCH ROOF SYSTEM



FULLY SUITED WITH THE COMPLETE RANGE OF  
SHEERLINE ALUMINIUM WINDOWS AND DOORS.

*Fully thermally broken using Thermlock® technology for  
market 'busting' thermal performance.*

**4500mm**  
ROOF PROJECTION  
without bolsters

MAX WIDTH  
**6500mm**  
unjointed, infinite\* with joints

MAX  
RAFTER SPACING  
**1000mm**

**28mm**  
GLAZING  
for full versatility

**2.5 - 35°**  
PITCHES

***SHEERVENT*®**  
FLUSH INTELLIGENT VENTILATION

AVAILABLE WITH OUR  
**INDUSTRY LEADING SHEERVENT®**  
for stylish automated ventilation, without ruining  
the roofs looks.



## FULL ALUMINIUM DESIGN

All exterior components are powder coated aluminium.

Creating Modern aesthetics with shallow external rafter caps for a clean, architectural look.

**FEATURES A FLUSH  
IN-LINE RIDGE END CAP,**  
following the same sleek  
design as the S1 roof  
lantern

**INNOVATIVE SYSTEM**  
allows for factory setting  
of the roof pitch in a  
controlled environment for  
quicker installations with  
less on-site operations and  
fewer issues

**DEEP INTERNAL  
50MM WIDE  
RAFTERS**  
for a premium look  
and strength

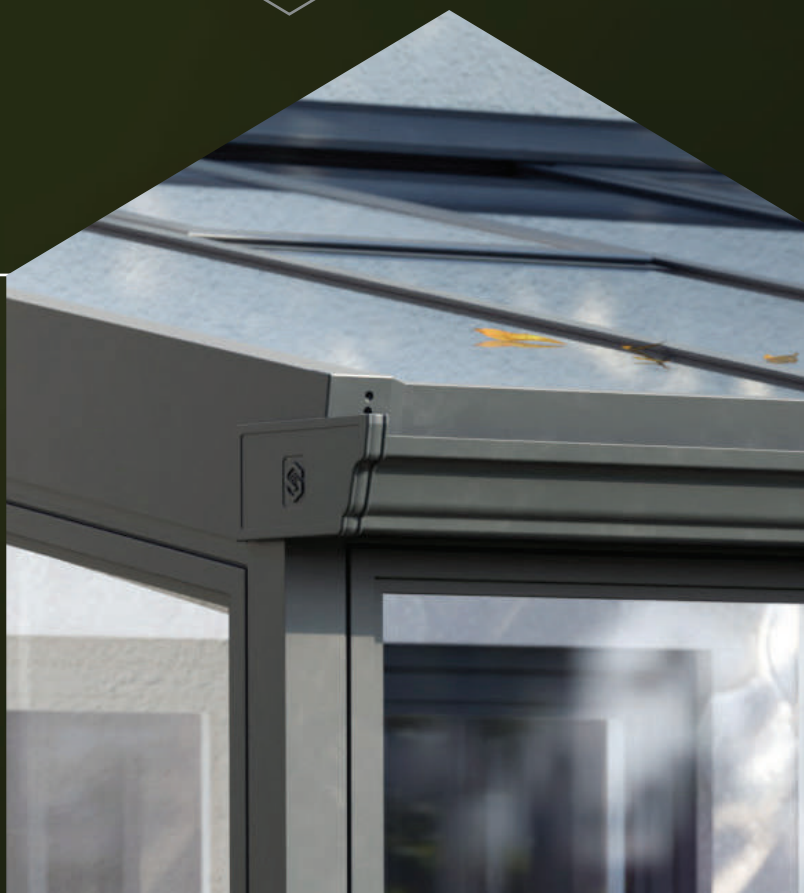
**THERMALLY INSULATED  
RAFTER BARS**  
Using the same  
Thermlock® technology  
as our S1 lantern for  
unbeatable performance

**FEWER  
COMPONENTS**  
than a traditional  
'lean-to' system to aid  
onsite assembly

**TRIPLE-LOCK  
WALL PLATE DESIGN**  
eliminates leak points,  
while providing a unique  
thermal barrier

**INSULATED EAVES BEAM  
FEATURES AN INTEGRATED  
GUTTER CLIP AND  
CONTINUOUS ALUMINIUM  
RAIN BAFFLE ALONG WITH A  
FULL ALUMINIUM GUTTER FOR  
A PREMIUM FINISH**

*Patents pending. See [www.sheerline.com](http://www.sheerline.com) for details.*





INTRODUCING THE

# FLAT ROOF LIGHT

EXPERTLY CRAFTED TO FLOOD YOUR INTERIORS WITH NATURAL LIGHT, THESE ROOFLIGHTS ARE THE EPITOME OF LOW-MAINTENANCE ELEGANCE, BOASTING SUPERIOR THERMAL INSULATION AND LIGHT TRANSMISSION.

*The cutting-edge, energy-efficient glass is designed to keep warmth inside, optimizing your home's thermal performance.*



## WATER TIGHT

Seamless design ensures exceptional water tightness. Leak-free rooflights.



## AIR TIGHT

Seamless design ensures exceptional air tightness.



## SAFETY

Robust construction guarantees maximum safety and durability.



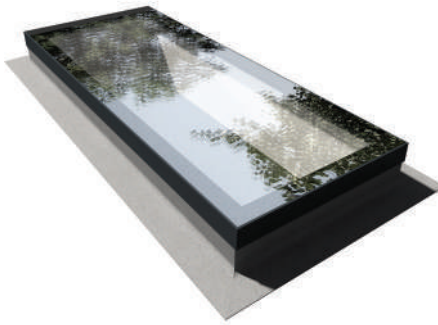
ALL FLAT ROOF LIGHTS  
**ARE FULLY ENCAPSULATED  
& WEATHER PROOF**



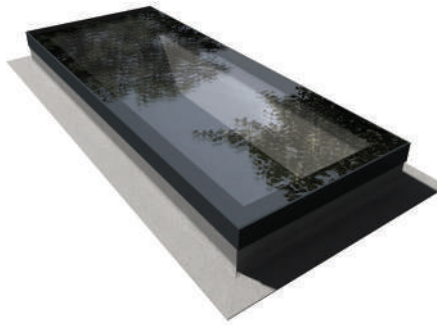
# GLASS TYPES

AVAILABLE IN *clear, solar, or privacy glass,*

Flat Roof lights promise seamless, leak-free,  
and fully weatherproof performance.



**CLEAR LOW /  
SOLAR CLEAR**



**SOLAR  
GREY**



**SATIN  
PRIVACY**

## KEY FEATURES



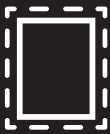
### **THERMAL TOUGHENED SAFETY GLASS**

Available in 6mm double glazed (U-Value up to 1.0 W/m<sup>2</sup>K) and triple glazed (U-Value up to 0.5 W/m<sup>2</sup>K) options.



### **SOLAR CONTROL GLASS**

Blocks a significant amount of ultraviolet (UV) light, which helps protect damage caused by prolonged exposure to sunlight.



### **DECORATIVE BORDER**

A black (RAL 9005) decorative border comes as standard, with other RAL colours available upon request.



### **LOW EMISSIVITY (LOW-E) GLASS**

Helps reduce the heat transfer through the glass and keeps indoor temperatures more consistent, resulting in lower energy costs for heating and cooling.



### **ALUMINIUM FRAME WITH THERMAL BREAK**

Anthracite Grey (RAL 7016) or Black (RAL 9005) aluminium frame featuring a thermal break to reduce condensation and improve energy efficiency.



### **STANDARD AND BESPOKE SIZES**

Available in both standard and custom bespoke sizes for easy and quick installation.



### **RANGE OF GLASS CHOICE**

Available in clear, solar or privacy glass.



### **TOUGHENED SAFETY GLASS**

Ensures safety and durability.



## STANDARD SIZE CHART

### FRAMED ROOFLIGHTS

300 x 300 mm\*

400 x 400 mm\*

500 x 500 mm\*

600 x 600 mm\*

600 x 900 mm\*

600 x 1200 mm\*

600 x 1800 mm \*

1000 x 1000 mm\*

1000 x 1200 mm\*

1000 x 1500 mm\*

1000 x 2000 mm\*

1000 x 2500 mm\*

1000 x 3000 mm\*

BESPOKE SIZES AVAILABLE ON REQUEST

### GLAZING

Double and  
Triple Glazing

### GLASS TYPE

ALL ARE LOW-E

- standard solar clear
- solar grey
- satin privacy

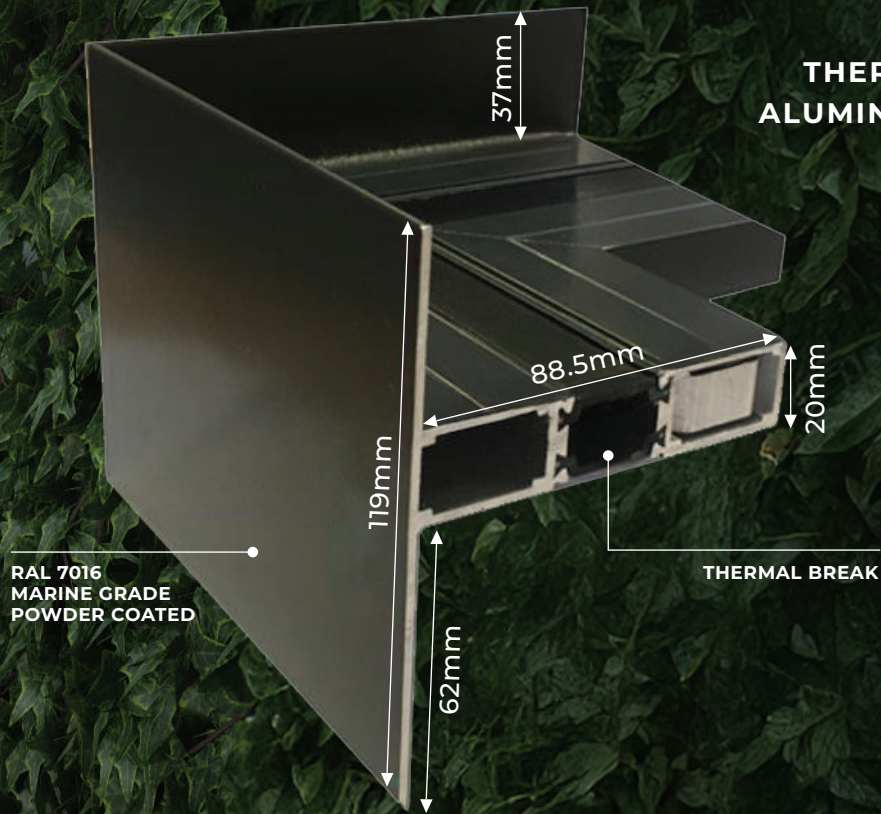
\*Internal opening size



# FRAME & GLASS

## TECHNICAL DETAILS

**THERMALLY BROKEN  
ALUMINIUM FLAT ROOF  
LIGHT PROFILE**



**ENERGY  
SAVING  
GLASS**

**U-VALUE AS  
LOW AS  
0.5 W/M<sup>2</sup>K**

**KEY  
BENEFITS**

**SCREEN  
PRINT  
BORDER**

**EXPRESS  
SERVICE**

**10  
YEAR  
WARRANTY**

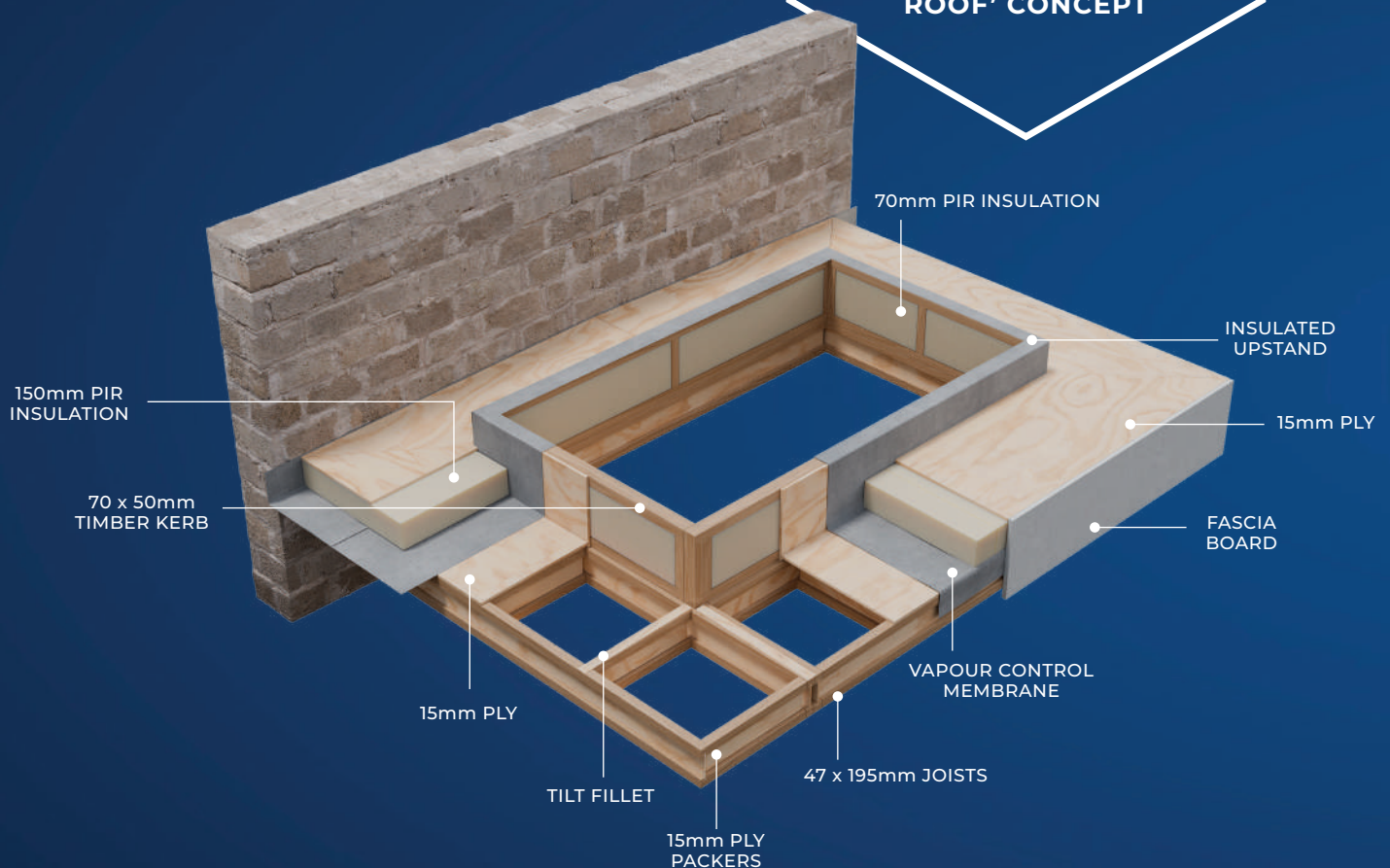


# FLAT ROOF SYSTEM

OUR OFF-SITE CONSTRUCTED FLAT ROOF SYSTEM IS EXTREMELY FAST TO FIT.

Designed to work seamlessly with lanterns, flat rooflights, or as a simple flat roof extension.

CONSTRUCTED FROM A LIGHTWEIGHT, COMPOSITE ENGINEERED TIMBER FRAMEWORK, IT OFFERS EXCEPTIONAL RIGIDITY AND STRENGTH, ALONG WITH SUPERIOR THERMAL PERFORMANCE, SUPPORTING A 'WARM ROOF' CONCEPT



## FOR USE WITH:



FLAT  
ROOF



FLAT ROOF &  
FLAT ROOF LIGHT



FLAT ROOF &  
SI LANTERN





## KEY FEATURES

- Complete timber kit, bespoke to your specifications
- Pre-assembled cassettes (where possible) minimise installation time
  - Insulated lantern kerb pre-assembled (insulation provided)
  - Multiple roof lights can be incorporated into a single roof
- Delivered in easy to handle 'pods' for quick on-site installation
  - Colour-coded parts for easy identification
  - Can be retrofitted to existing frames or brickwork
- Strong timber 'I' beams designed to support large door openings
  - Option for standard gutter, fascia, or decorative aluminium shroud upgrade
- Full structural calculations tailored to your postcode



## TECHNICAL FEATURES

- Exceptional thermal performance of 0.12 W/m<sup>2</sup>k
- Standard fall of 1:40 (approx. 1.4°) to ensure overall slope is within 1:80, in accordance with BS6229 & BS8271
- Warm roof construction with 150mm insulation above the 'I' beams
  - Cantilevered soffit overhangs up to 1m (subject to survey)
  - Fascia, soffit, and gutter available in white, grey, or black as standard; any RAL colour upgrade available upon request (additional price & lead time)
  - Insulated plasterboard available upon request
- Fewer components compared to competitor systems
- Option for thermally broken S1 Lantern or Flat Roof Light



## SERVICE BENEFITS

- On-site support available
- Simple and efficient ordering process
- Building control compliant
- Can be delivered directly to site (subject to location)



# TILED ROOF SYSTEM

THE TILED ROOF SYSTEM IS A VERSATILE, STRUCTURALLY ROBUST INSULATED ROOF SYSTEM. IT CAN EASILY BE INSTALLED AS PART OF NEW BUILD DOMESTIC CONSERVATORY OR NEW EXTENSION PROJECT. DUE TO THE ROBUSTNESS OF THE CONSTRUCTION, IT CAN ALSO BE INSTALLED ON MANY COMMERCIAL PROPERTIES.

*With a choice of lightweight tile options, glass hybrid variant, and fully Building Control Compliant, it is 'the go to' tiled roof choice for the fenestration industry.*



**SELF CLEANING  
GLASS**



**OUTSTANDING  
SOLAR CONTROL**



**SUPERB THERMAL  
PERFORMANCE**

**EXCELLENCE AND INNOVATION**

BUILT INTO EVERY DESIGN.



The glass panels feature blue solar control, self-cleaning solar control, self-cleaning glass, up to 3 metre lengths.

**THE STYLISH  
WAY OF  
ADDING MORE  
LIGHT INTO  
YOUR HOME**

The Hybrid glass panel feature allows a stylish look internally when plastered and painted.

This allows more light into your home without over-heating in the summer.

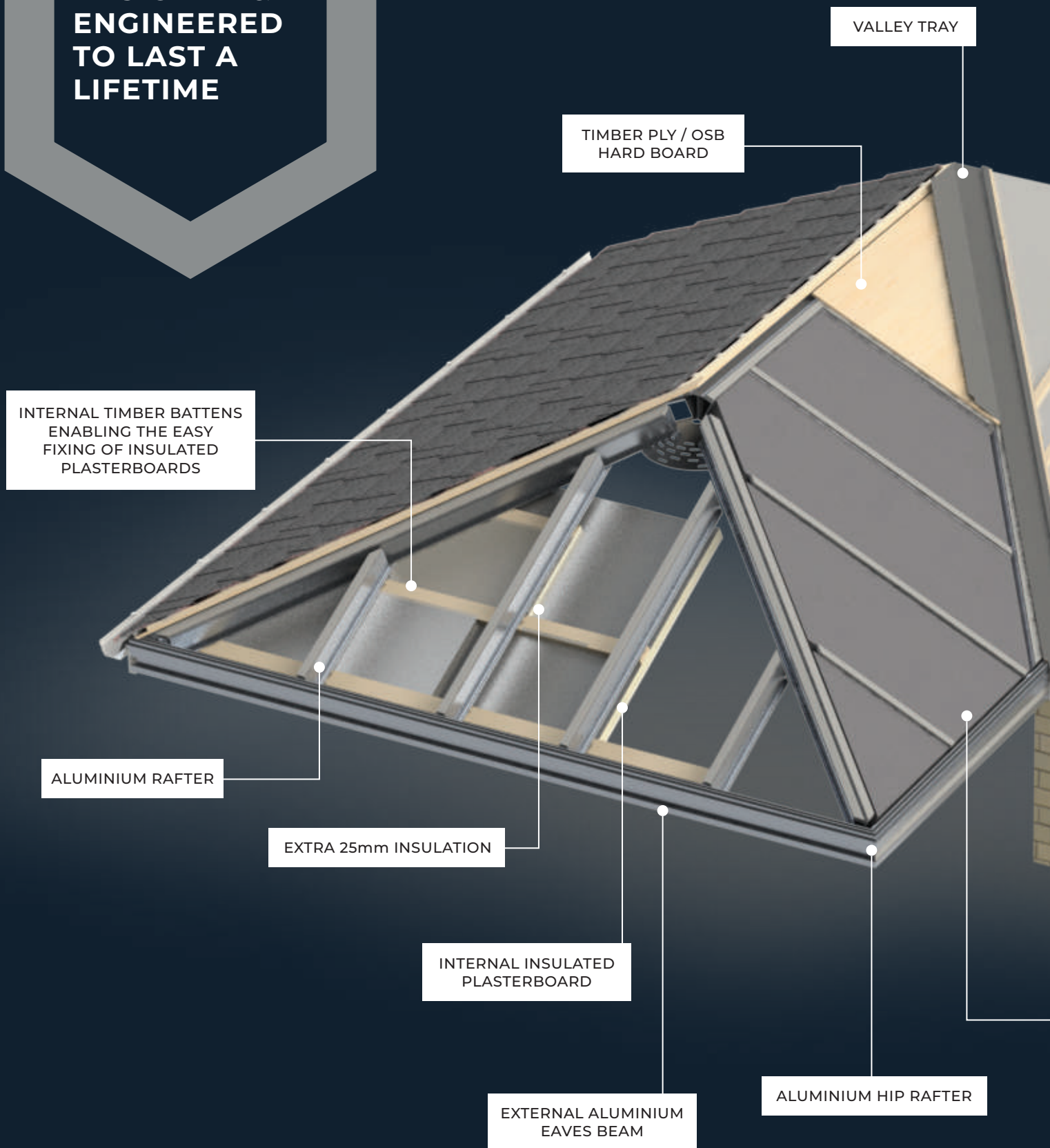


EXTERNAL GREY BAR  
TOP CAPPING, WHITE  
INTERNAL FINISH

CHOICE OF TILE  
OR SLATE FINISHES

SOLAR CONTROL  
GLASS PANEL

**DESIGNED &  
ENGINEERED  
TO LAST A  
LIFETIME**





U-VALUE  
**0.15**  
TO MEET BUILDING  
REGULATION  
SPECIFICATIONS

WATERPROOF  
BREATHABLE  
MEMBRANE

TIMBER BATTENS  
ALLOWING EXTRA  
AIR FLOW

GLASS PANEL  
FEATURE

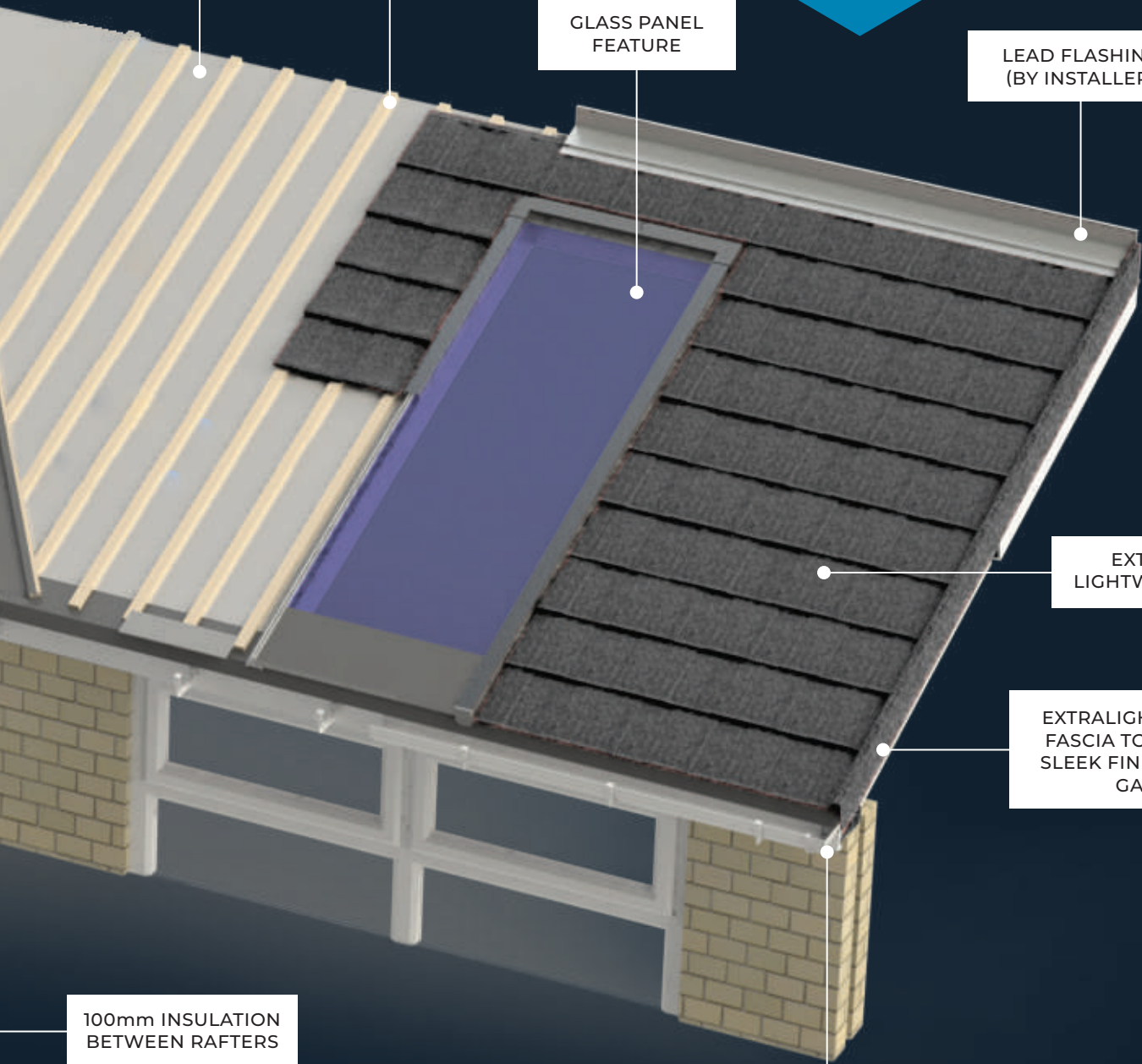
LEAD FLASHING  
(BY INSTALLER)

EXTRALIGHT  
LIGHTWEIGHT TILES

EXTRALIGHT BARGE &  
FASCIA TO ENSURE A  
SLEEK FINISH TO SIDE  
GABLE

STYLISH UPVC GUTTERING

100mm INSULATION  
BETWEEN RAFTERS





# ROOF COVERINGS

WITH ITS EXCEPTIONAL DURABILITY, THE EXTRALIGHT STONE-COATED STEEL TILE OFFERS SUPERIOR PERFORMANCE.

*ExtraLight high performance textured steel tiles are available in 3 colours.*

CHARCOAL  
V2

EMBER  
V2

WALNUT  
V2

## UNIQUE

A new and unique high performance textured roof tile. The shingle textured-finish tile captures the subtle look and charm of low-profile traditional shingles.

## PERFORMANCE

ExtraLight eliminates the de-laminating, lifting and general break-down caused by UV rays and high winds. Enjoy the superior performance of stone-coated steel.

## CHOICE

The ExtraLight Shingle comes in a choice of natural weathered tones to recreate the visual appeal of a clay tiled roof, carefully selected to match most traditional roofs.

## APPROVED

Our tiles are fully registered and compliant with the strict UK & European standards required for use with a roof pitch as low as 10 degrees.



## THE TRADITIONAL SLATE LOOK (TAPCO SLATE)

Roofing slate has for centuries been desired for its durability and aesthetic appeal, but it does have drawbacks with its weight, pitch restrictions and brittleness.

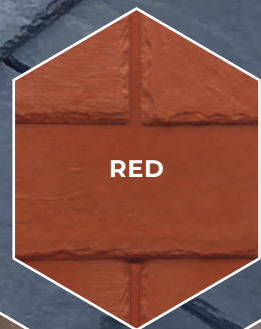
The Composite Slate Roof offers the look of traditional slate while remaining lightweight and hard-wearing, boasting a 10-year guarantee.

Manufactured by using recyclable materials virgin limestone and polypropylene, its performance has been approved and tested down to a minimum pitch of 12 degrees.

**WITH A WIDE CHOICE OF 5  
COLOURS, THIS LIGHTWEIGHT  
SLATE IS A COMMON ROOF  
COVERING CHOICE FOR THE  
TILED ROOF SYSTEM.**



GREY



RED



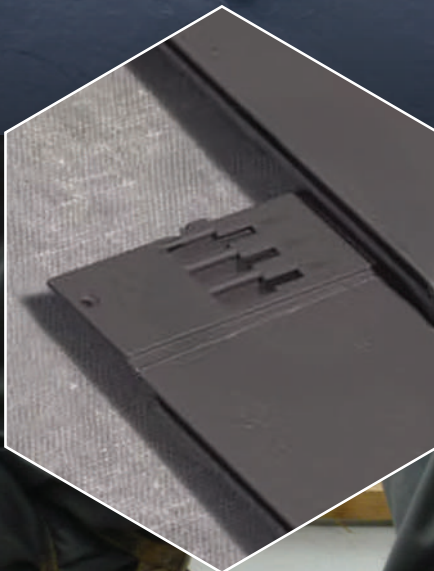
BLACK



BROWN



PLUM



# ENVIROTILE

Unique interlocking fixing system  
- for unrivalled performance and quick installation



# ARCHED FRAMES

We understand that properties with character and heritage features require specialist solutions that ensure homeowners can renovate properties sympathetically, without compromise.



WITH A GROWING DEMAND IN THE MARKET FOR ARCHED ALUMINIUM WINDOWS AND DOORS, OUR SPECIALIST PROFILE BENDING SERVICE ENABLES FABRICATORS AND INSTALLERS TO ORDER PERFECT ARCHED, CURVED AND ROUND PRODUCTS.

*Produced in-house using a state-of-the-art TIM-ING Profile Bending Machine.*



ARCHES



CURVES



GOTHIC  
ARCHES



CIRCLES

## SASH OPTIONS

STEPPED

Contemporary  
No Sash

## OUTERFRAME OPTIONS

FLUSH

Standard, Small,  
Intermediate, Large





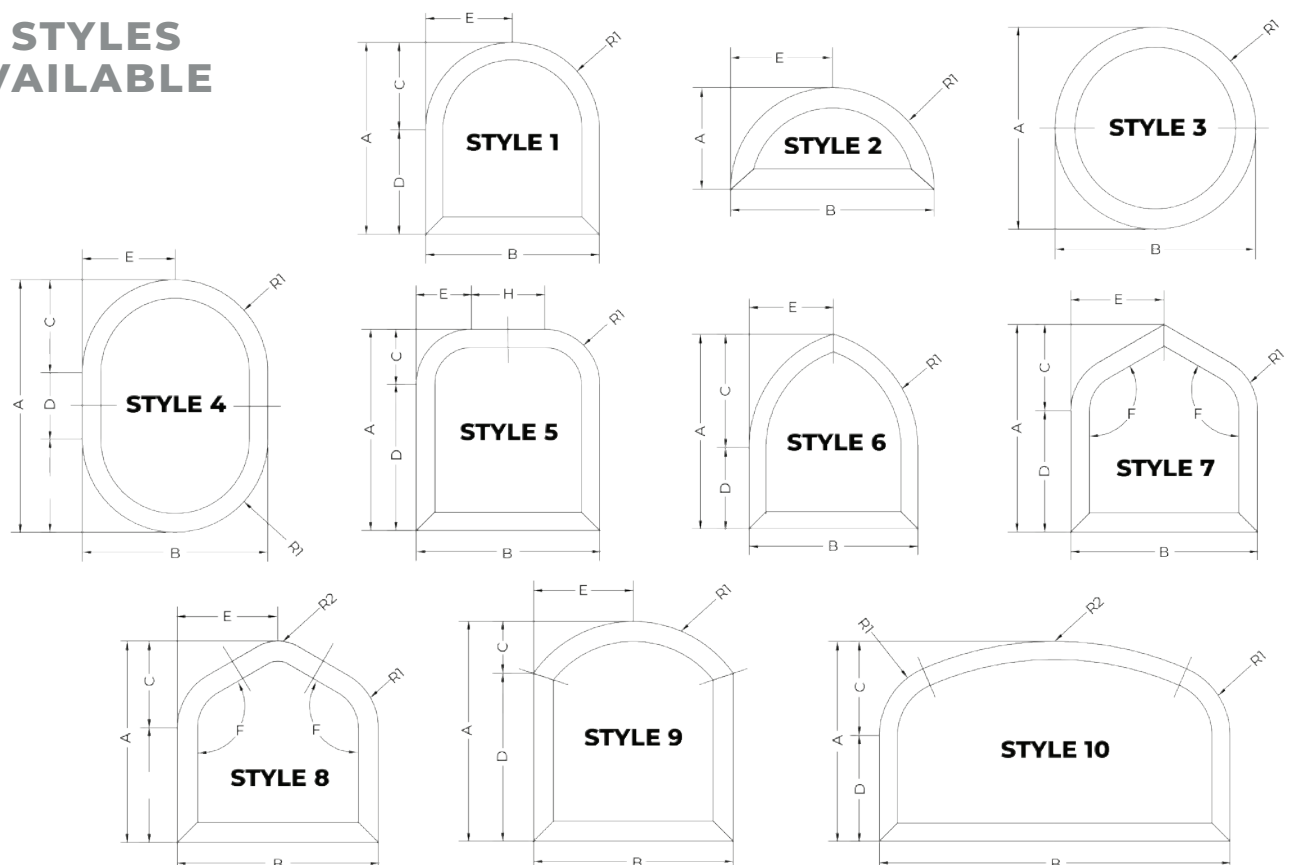
## MANUFACTURED USING A TIM-ING'S PROFILE BENDING MACHINE,

this equipment offers some of the most advanced bending machinery for aluminium profiles in the world.

There are 3D cameras within the machine, which enable it to be automated for efficiency and to ensure repeatable quality.

**STANDARD, CUSTOM,  
OR DUAL COLOUR  
CHOICES AVAILABLE**  
Including woodgrain foiling

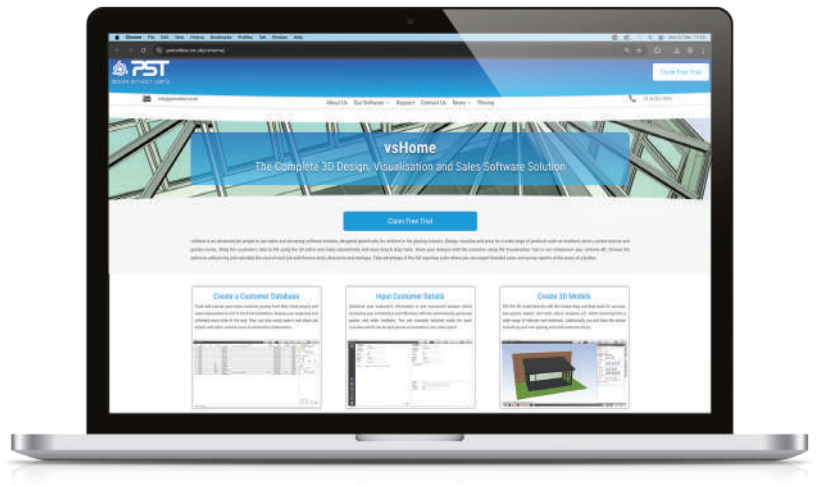
## 10 STYLES AVAILABLE



# SOFTWARE SUPPORT: vsHOME

vsHOME is a complete 3D design, visualisation and sales software solution produced by PST that allows you to design and price any tiled or glazed roof extension, lantern or orangery.

The simple to use sales and surveying software solution, designed specifically for retailers in the glazing industry.



## BENEFITS OF vsHOME



### QUICK AND EASY

vsHOME software is quick and simple to use, allowing you to take control of designing and pricing for your clients without waiting for quotes.



### 3D DESIGN SOFTWARE

Helps bring your customer's idea to life using a 3D editor and make adjustments with easy drag & drop tools. Allowing your customers to visualise their designs.



### E ORDERING

Enables you to place orders [via email] with Fabricators direct using the vsSoftware with Job Files allowing both parties access to the original design and specification.



### QUOTATIONS MADE EASY

Choose the option to add pricing and calculate the cost of each job with finance tools, discounts and markups. All designs, colours and glazing options are available to provide accurate pricing.



### FOR MORE INFORMATION

on license fees, or for a free trial visit:  
[pstonline.co.uk/vshome](http://pstonline.co.uk/vshome)





# DOWNLOADS



## SCAN FOR MORE INFORMATION

on the products available from Sheerline Bespoke,  
or to access survey forms, installation information and product brochures visit:  
[sheerlinebespoke.com](http://sheerlinebespoke.com)



**FOR ANY PRODUCT ENQUIRIES OR TO RECEIVE A QUOTE**

call **01332 978 070**

or email [sales@sheerlinebespoke.com](mailto:sales@sheerlinebespoke.com)



TIM-MACHINE



**SHEERLINE<sup>®</sup>**  
BESPOKE

[sheerlinebespoke.com](http://sheerlinebespoke.com) | 01332 978070